



Encl. 9-20
PANUKE J-99 PP3C

Datum elevation: 47.2 m aMSL
X-coordinate: 682306.4
Y-coordinate: 4853181.9
TD (ft MD): 4163.0
Drilled in: 1999 (PanCanadian)

Scale 1:4000
UWI: J-99 PP3C Well: PANUKE J-99 PP3C



PLAY FAIRWAY ANALYSIS
OFFSHORE NOVA SCOTIA - CANADA
June 2011

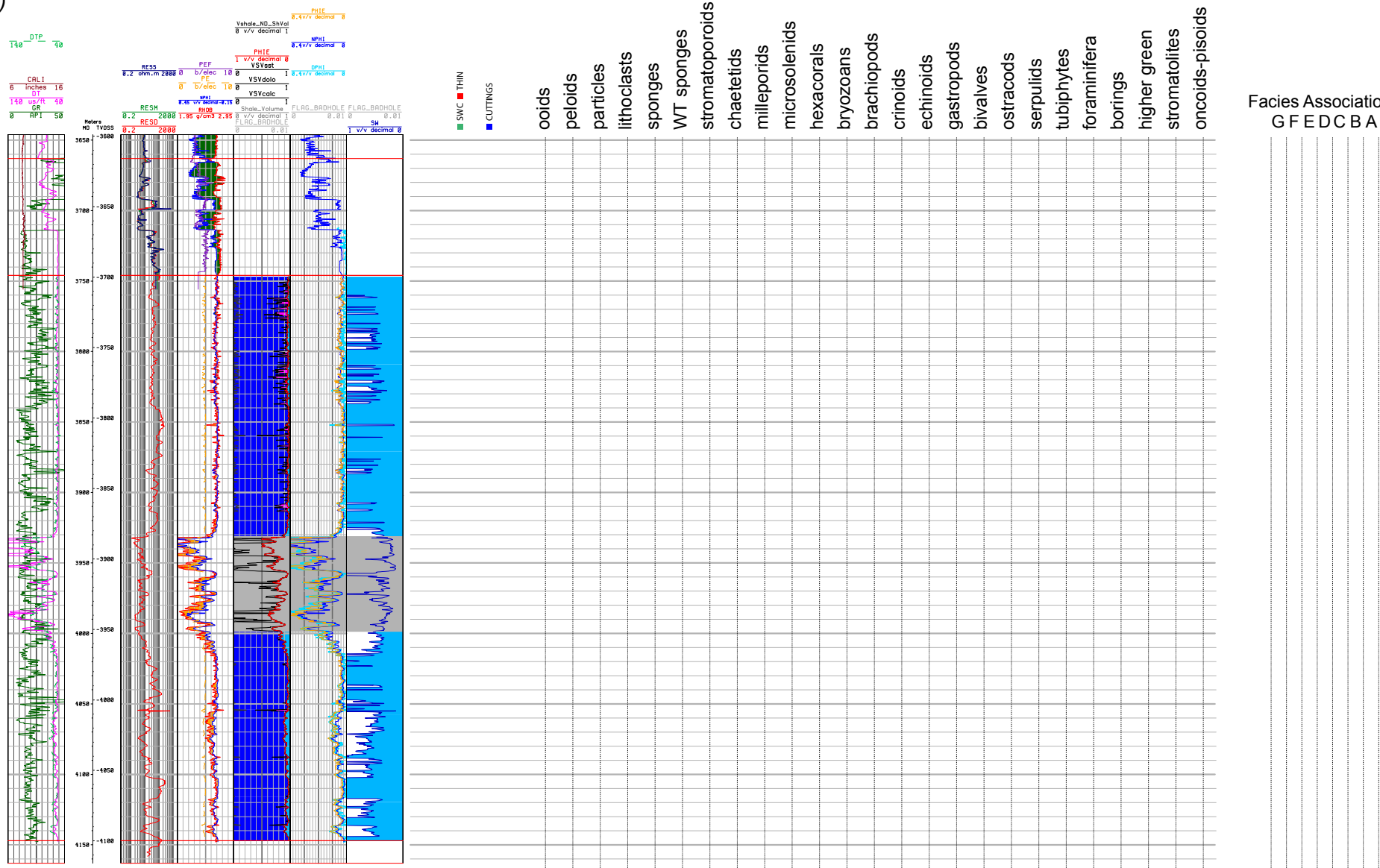
Seismic Interpretation
based on reflectivity
(no reflectivity log
available for this well)

Petrophysical
Evaluation

Samples

Sedimentological Data
(no data available for this well)

Stratigraphic Breakdown
(not interpreted)



PETROPHYSICAL EVALUATION

- Sandstone
- Claystone
- Limestone
- Dolomite
- Porosity

FACIES ASSOCIATIONS

- G1 - Shallow-water siliciclastics (delta to prodelta)
- G2 - Muddy (lagoon) platform interior
- F - Mixed carbonate-siliciclastic platform interior
- E - High-energy oolitic sand shoals
- D - "Clear" shallow-water coralgal reef margin
- C1 - "Turbid" shallow-water sponge reef mounds
- C - Proximal foreslope
- B - Distal foreslope
- A - Deep marine shelf

SEQUENCE STRATIGRAPHIC BREAKDOWN

